

80 Walton Road
Wavendon
Milton Keynes
MK17 8LW
david.hopkins@milton-keynes.gov.uk

19 June 2024

Review Officer (Milton Keynes),
LGBCE,
PO Box 133,
Blyth,
NE24 9FE.

Dear Sirs

Boundary Review for Milton Keynes

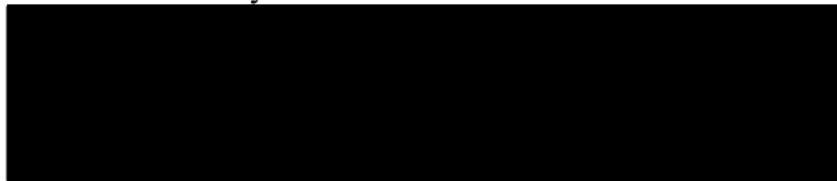
I write specifically in connection with the current Danesborough & Walton ward at Milton Keynes City Council and how it might be amended for the proposed 60 councillor, 20 ward arrangements moving forward.

1. The parish of Walton is currently split between two city council wards. This impacts the integrity of the parish and causes confusion among parish residents; I therefore submit that Walton should become a single ward in its own right. The ward to be called, simply, Walton ward.
2. The remainder of the Danesborough and Walton ward should become a new Danesborough ward consisting of the parishes of Wavendon, Bow Brickhill and Little Brickhill and the town of Woburn Sands. The evidence for this being as follows;
 - A strong geographic feature, the Greensand Ridge connects Little Brickhill, Bow Brickhill and Woburn Sands and the historic Wavendon Woods form part of the ridge, linking all four communities historically and geographically.
 - The Marston Vale railway line (projected to be part of the East West rail link) passes through Wavendon Parish with station stops at Bow Brickhill and Woburn Sands.
 - Strong social, retail, sporting and educational links exist across parish boundaries within Danesborough as do medical (NHS GP) links connecting Asplands Surgery in Woburn Sands with patients in the town and from Wavendon and Bow Brickhill parishes. Other organisations such as Woburn & Wavendon Lions FC, Woburn Sands Rotary, Wavendon Cricket Club, Woburn Sands Tennis Club, the local WI's and many other take their membership from across the parishes and the town.
 - Other historic links include the 2100 year old Danesborough Fort in Wavendon Woods (now in the Parish of Woburn Sands) links the ward name with the creation of the ward back in 1974.
 - There is a strong retail link between the town of Woburn Sands and its near neighbours in Wavendon and Bow Brickhill offering a range of retail, public house and restaurant outlets serving all the local communities.
 - Local, local government at parish level meets together on a regular basis either through the Danesborough Forum, the SEMK Stakeholder Group or Woburn Sands Futures (amongst others). There are a plethora of 'common local interest's discussed at these meetings and a close working relationship exists at parish and town council level within the Danesborough ward.
 - The new urban expansion development of SEMK (plus the SLA development of Church Farm) are co located and split 50% in the parish of Woburn Sands and 25% Bow Brickhill and 25% Wavendon. These number approx. 3000 additional dwellings which will come into occupancy during the lifetime of the outcome of this review.

- Wavendon Parish Council operates a One Wavendon policy blending and integrating the older communities of Wavendon (Church End, Lower End and Cross End) with the new expansion areas of Eagle Farm South and Glebe Farm. It is essential for community cohesion that the existing Parish of Wavendon is not divided in any way following the wad boundary review.
- There is a case for examining and including in the Glebe Farm (Wavendon) development houses that have been developed to the east of Ortensia Drive in Wavendon Gate as part of the parish of Wavendon, naming all within the Glebe Farm development to avoid confusion and achieve very positive community outcomes.

I hope these arguments can be fully taken into account and look forward to commenting again at the formal consultation stage.

Yours sincerely



Cllr. David Hopkins
Representing Wavendon, Woburn Sands, Walton (part), Bow
Brickhill and Little Brickhill at MK Council



THE PARISH OF WAVENDON

ESSENTIAL INFORMATION



Welcome to Wavendon Parish Council's introductory magazine for our local area. We do hope that you will find this information helpful.

The civil parish of Wavendon broadly comprises 753 hectares, and from the 2001 census we know that there were then 349 dwellings housing 766 people. Today (2023) there are more than 3000 dwellings in the parish. The village also contains the 13th century Church (St Marys) which stands in the heart of the Church End community on Walton Road.

Wavendon is listed in the Domesday Book as Wauendene, and it now stands as one of the gateways to the modern city of Milton Keynes. We sit within the boundary of the unitary authority of the City of Milton Keynes. The Parish includes Eagle Farm South and Glebe Farm plus the ancient 'ends', namely Lower End, Cross End and Church End. The Parish is set to continue to expand over the coming years with permissions for several thousand homes contained in the current Milton Keynes Local Plan (Plan:MK), including the so called South East Milton Keynes growth area (SEMK). This site (SEMK) was adopted by MK Council in 2019. Even more dwellings are proposed through the review process and might appear in Plan:MK 2 due to be adopted in 2025.

Cllr. David Hopkins
CHAIRMAN – WAVENDON PARISH COUNCIL



Disclaimer

Whilst the Wavendon Parish Council has made every attempt to ensure the accuracy and reliability of the information contained in this document this information should not be relied upon as a substitute for formal advice from the original organisations. The Parish Council will not be responsible for any loss, however arising, from the use of, or reliance on this information.

You should not assume that this publication is error-free or that it will be suitable for the particular purpose which you have in mind when using it. The Parish Council assumes no responsibility for errors or omissions in this publication or other documents which are referenced by or linked to this publication.

Welcome all our New Residents to Wavendon

If you have any Parish issues or ideas you would like to share then write or email me at
80 Walton Road, Wavendon, Milton Keynes, MK17 8LW
or email at david.hopkins@milton-keynes.gov.uk

EMERGENCY HELP

Police (Thames Valley)	999 or 101
Electricity (all suppliers:)	105
Gas (all suppliers:)	0800 111 999
Anglian Water:	0345 714 5145

Milton Keynes Council

Please check the council's website for all information or to report routine issues at
www.milton-keynes.gov.uk

*All phone numbers prefixed 01908
unless specified*

Main switchboard:	691691
Council tax enquiries:	253794
Electoral registration:	254706
Registrar (Births, deaths and marriages):	
372101	
Environmental Health:	252398
Lost dogs & Strays:	252398
Noise nuisance:	252398
Pest control:	252551
Refuse collection/recycling and household waste sites:	
252570	
Dumped - fly tipping:	252570
Graffiti:	252570
Public Transport:	252542
Bus passes:	254660
Trading standards:	0800 2231133
Youth information:	604700
Social Services:	253772/253169

TOWN, PARISH & COMMUNITY COUNCILS IN THE DANESBOROUGH & WALTON WARD

Wavendon Parish Council

clerk@wavendonparishcouncil.co.uk

Bow Brickhill Parish Council

clerk@bowbrickhill-pc.gov.uk

Woburn Sands Town Council

a.jordan@wstc.org.uk

Walton Community Council

manager@waltoncommunitycouncil.gov.uk

Little Brickhill Parish Council

clerk@littlebrickhillparishcouncil.co.uk

OTHER ORGANISATIONS

NHS Direct 111

Accident & Emergency

Milton Keynes General Hospital, Standing Way,
Eaglestone, Milton Keynes

The Parks Trust: 01908 233600

Citizens Advice Bureau: 01908 604475

Website

Find your nearest doctor, school etc
<https://mapping.miltonkeynes.gov.uk>

Access to the Internet at all local MK Libraries
including Woburn Sands, Kingston and Bletchley

**Refuse Collection day:
Wednesday**



Useful Contact Information

Travel

Local Bus Services:

The area is served primarily by Demand Response Transport services (DRT) known as MK Connect. MK Connect is not restricted to previous timetables or routes, and picks up passengers from their chosen destination to within 400m of their required drop off point when they want to travel.

The service will be available on evenings and weekends across MK, operating from:

6:00am – 11:00pm on Monday to Saturday

9:00am – 6:00pm on Sunday

Public holidays will have Sunday service levels. Easter Sunday and Christmas Day will have no service.

MK Connect is available by smartphone app, web or phone booking.

Just call for a vehicle a few minutes before you want to travel.

Concessionary passes under the ENCTS scheme will still be valid for free travel after 9:30am on weekdays and all day at weekends.

You can pay with debit/credit card via the app or in vehicle with the PAYG purse on the MK Move card. Period passes are not accepted/

More information at Ride with Via -

MK Connect <https://ridewithvia.com/mk-connect/>

<https://www.britanniabus.co.uk>

450 Woburn Sands to Central Milton Keynes via Kingston Centre and MK University Hospital

Britannia operate a once-a-day service (weekdays only) leaving the Memorial Hall at 11.00am and returning from Central MK at 13.00pm. This route is constantly under review so check with bus timetable information for changes/additions etc.

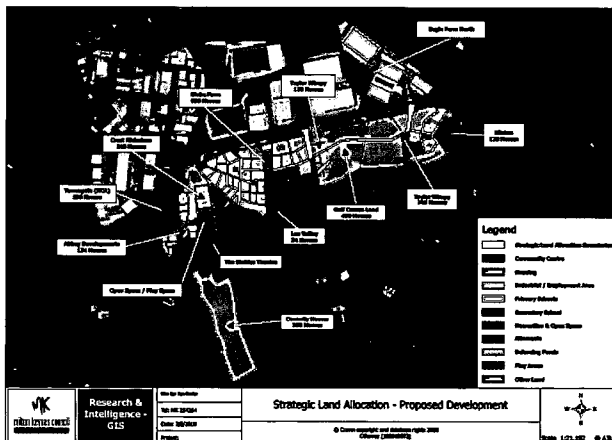
For all other bus timetable information go to <https://www.arrivabus.co.uk/>
or <https://www.milton-keynes.gov.uk/highways/bus-rail-and-taxis/bus-timetables-maps-and-travel-updates>

Train:

<http://www.nationalrail.co.uk/stations/wob/details.html>

<https://www.londonnorthwesternrailway.co.uk>

Marston Vale line from Bletchley to Bedford can be accessed at the nearby station of Woburn Sands. Passengers can change at Bletchley for routes to Birmingham the North West and London (Euston) and at Bedford for routes to the East Midlands and South Yorkshire and London (St Pancras and on to Brighton).



Health Centre

Brooklands Health Centre (for GP Services)
Montague Cres, Broughton,
Milton Keynes MK10 7LN



Telephone: 01908 874 444 Appt. Cancellations Only: 07922 021 097

With patients' needs at the heart of everything we do, our website has been designed to make it easy for you to gain instant access to the information you need. As well as specific practice details such as opening hours and how to register, you'll find a wealth of useful pages covering a wide range of health issues along with links to other relevant medical organisations.

<http://www.brooklandshealthcentre.nhs.uk>

Defibrillator

Located on the outside wall of the Community Centre opposite the Parish Church on Walton Road (Church End) and one on the Hub Pavilion Building off Dankworth Way. More are planned at various sites across the Parish (see the Wavendon Parish Council web site for details <https://www.wavendonparishcouncil.co.uk/>)

Hospital

<http://www.mkhospital.nhs.uk>

Milton Keynes University Hospital NHS Trust. Please contact the switchboard team if you cannot find the information of your intended department under the web directory.

The number is 01908 660033

Dental Surgery

<http://www.woburnsandsdentalpractice.co.uk>

The surgery welcome all new and existing patients, Register Online for an initial patient consultation, Book An Appointment, or call 01908 282428 to speak to the surgery direct.

GP Surgeries (for the older part of Wavendon)

Asplands Medical Centre
Asplands Close Woburn Sands
Milton Keynes MK17 8QP
Phone: 01908 582069

www.asplandsmedicalcentre.co.uk

Woburn Surgery
Eleanor Close
Woburn MK17 9QU

Roka Dental,
Newport Road,
Woburn Sands,
MK17 8UD.
Tel. 01908 109149
<https://rokadental.co.uk/>

Nurseries, Pre-School & Schools

Nursery & Pre School - Little Oaks Nursery
www.littleoakswavendon.co.uk

Please direct all enquiries to the Nursery Head,
Mrs Caroline Ward. Tel: 01908 583826



Wavendon Pre School & Day Nursery (Newport Rd, Wavendon)
www.asquithnurseries.co.uk
Tel: 01908 586518

St Marys CoE Primary School and Nursery
<http://www.stmaryswavendon.milton-keynes.sch.uk>
Headteacher: Mrs Amanda Dicks
Wafandun Lane, Eagle Farm South, Wavendon. MK17 7AA
Tel: 01908 582182 Email: office@stmaryswavendon.milton-keynes.sch.uk

Wavendon Gate Primary School
Kerry Jarman - Headteacher
Telephone: 01908 586394
Email: admin@wavendongateschool.co.uk

Secondary Education - Walton High (Secondary) School
www.waltonhigh.org.uk
Main School Office: 01908 677954 | Attendance: 01908 558769
Post 16 Office: 01908 558766 | Post 16 Attendance : 01908 247601

Oakgrove Secondary
<http://www.oakgrove.school>
Tel: 01908 545300 Fax: 01908 236218 Email: oakgrove@oakgrove.school

Glebe Farm All Through (2-16) school campus
<https://www.iftl.co.uk/>

Glebe Farm School is an authentic and inclusive all-through school providing exceptional early years, primary and secondary education from September 2022. Located within the Glebe Farm area of Milton Keynes, our school will be the 'beating heart' of this new and developing community, eventually serving up to 1,530 children and young people from the immediate residential area and also nearby towns and villages.

We will provide unrivalled curriculum and enhancement opportunities, enabling pupils and students from all backgrounds to pursue their interests and fulfil their potential. We are part of Inspiring Futures through Learning (IFtL), a family of 14 schools, whose vision is to inspire the future of us all through learning together. Glebe Farm school is a member of the Inspiring Futures Through Learning Academy Trust.

At Glebe Farm School we will develop the characteristics of integrity, responsibility, endeavour, bravery and empathy in our staff, children and young people. These core values will permeate throughout our school, our curriculum, and our community. Our commitment to you is to cultivate a love for learning, each student will receive a rich education through a bespoke curriculum that is innovative, creative, and stimulating.

Other schools nearby ...

**Fulbrook Academy
(Woburn Sands)**

Fulbrook is a very popular, high achieving school, which is currently four-form entry for children aged 9-13 years, but soon to become an extended secondary school (9-16), from September 2022. Please visit our school website to watch a series of short films and presentations about our new school vision and to learn more about our fabulous school.

The future is coming... Come with us!

<https://www.fulbrook.school>

**Swallowfield Primary School
(Woburn Sands)**

Ages 4-11

This is a good school, in which pupils make good progress.

It has several outstanding aspects.

It provides an excellent caring and supportive environment, particularly, but not exclusively for those pupils whose circumstances make them most vulnerable. Pupils feel extremely happy and safe in the school because of the excellent relationships and good safeguarding arrangements, and consequently they enjoy school; their attendance is high.

<https://swallowfieldprimary.com>

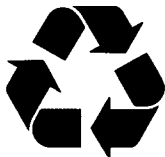


Post Boxes

In Church End, at the Wavendon Arms, Lower End, Hillway and Cross End.
New post boxes are being installed at Eagle Farm South and Glebe Farm.



Waste & Recycling



<https://www.milton-keynes.gov.uk/waste-recycling>
Milton Keynes Council operates a weekly waste and recycling collection for all your rubbish. Collection day is Wednesday. Waste must be presented by 7am on the day of your collection (but not before 5pm the evening before)
Phone: 01908 252570

Pub / Restaurant

The Wavendon Arms
<https://www.thewavendonarms.co.uk/>
Phone: 01908 584277



There are several restaurants and public houses in Woburn Sands
see <http://www.woburnsands.org.uk>

Local Market



Woburn Sands Community Market is held on the second Saturday of the month
from 10am - 2pm, at Memorial Green, High Street, Woburn Sands
(by the Library)
hello@woburnsandsmarket.co.uk

Veterinary Practices

Greensands Vets
<http://www.greensandsvets.co.uk>
Phone: 01908 282101



Milton Keynes Veterinary Group
<http://www.mkvetgroup.co.uk>
Phone: 01908 397777

Local Clubs & Associations

There are numerous clubs and associations operating from the Wavendon Community Centre on Walton Road and the Wavendon Hub (located off Stockwell Lane/Dankworth Way) including:



Hartbeeps, Socratots, After School Club, Karate, Yoga (2), Drama groups (2), MKS Artists, Square Dancing, Junior Football, Pilates, Baby Ballet, Tai Kwando, Baby College, Church Groups, Language Classes (English), Nursery, Salsa, Meditation, Counsellor Services, WI

Enquiries and bookings email: hallmanager@wavendonparishcouncil.co.uk

Likewise in Woburn Sands which operates a number of village halls catering for pre-school groups, the Woburn Sands Town Band, Parents & Toddlers group, Sands Singers and many other organisations.

Go to <http://www.woburnsands.org.uk/Woburn-Sands-Town-Council/> for more information

Local professional Sports Clubs

MK Dons League Soccer
<https://www.mkdons.com>

Northampton Saints Premiership Rugby
<https://www.northamptonsaints.co.uk>

Bedford Blues Championship Rugby
<https://bedfordrugby.co.uk/news>

Police



<https://www.thamesvalley.police.uk/area/your-area/tvp/milton-keynes/danesborough-and-walton/about-us/top-reported-crimes-in-this-area>

Phone 101 non-emergency – 999 emergency

Email: MKSouthCluster@thamesvalley.pnn.police.uk

Library

One at Kingston Centre and our local library is at Woburn Sands (High Street). Woburn Sands Library is located in the Institute in the High Street and is staffed by Milton Keynes Council Employees and Volunteers.



Worship

St Marys Parish Church (CoE) Wavendon
01908 582839 - <https://www.stmaryswavendon.co.uk>



St Marys Roman Catholic Church (Aspley Guise)
01908 583195 - <https://stmarysrcchurch.org.uk>

Methodist Chapel (Woburn Sands)
01908 614411 - 0845 601 4867 -
<http://mkmethodist.org.uk/churches-2/woburn-sands-methodist-church/>

Christ the Cornerstone in Central Milton Keynes
<http://www.cornerstonemk.co.uk/>
Church of Christ the Cornerstone where five denominations work together, Baptist Union / Church of England / Methodist Church / Roman Catholic Church / United Reformed Church
T. 01908 237777

Milton Keynes is a vibrant city with many different cultures and faith communities.
The Council of Faiths brings faith communities closer together.

<https://sites.google.com/a/mkcoff.org/www/council-of-faiths>

Christianity

The Church of England Website
<https://www.churchofengland.org>

Baptists Together
<https://www.baptist.org.uk>

The Methodist Church
<https://www.methodist.org.uk>

The Catholic Church
<https://www.aboutcatholics.com>

The United Reform Church
<https://urc.org.uk>

Judaism

Board of Deputies of British Jews
<https://bod.org.uk/>

The Movement for Reform Judaism
<https://www.reformjudaism.org.uk/>

Hinduism

Hindu Council UK
<https://hinducounciluk.org.uk/>

Islam

MK Islamic Arts, Heritage and Culture
<https://mkiac.org>

The Islamic Society of Great Britain
<https://isb.org.uk/>

Sikhism

Network of Sikh Organisations
<https://nsouk.co.uk/>

Buddhism

Network of Buddhist Organisations
<https://www.nbo.org.uk/>

Humanism

Humanists UK
<https://humanists.uk/>

Baha'i

UK Bahai Community
<https://www.bahai.org.uk/>

If you're not sure about what faith groups are active in our area, there are a range of websites that can help you find what's available in our locality including:

<https://www.achurchnearyou.com/>

<https://directory.cbcew.org.uk/>

<https://www.methodist.org.uk/about-us/connect/find-a-church/>

<https://mosques.muslimsinbritain.org/>

<https://www.quaker.org.uk/meetings>

<https://www.reformjudaism.org.uk/synagogue-locator/>

<https://www.salvationarmy.org.uk/map-page>

<https://urcdirectory.org.uk/>

Rotary Club of Woburn Sands

[http://www.rotary-ribi.org/districts/
page.php?PgID=676939&DistrictNo=1260](http://www.rotary-ribi.org/districts/page.php?PgID=676939&DistrictNo=1260)



Theatre - Stables Theatre (Wavendon)

The Stables (with two auditoriums – the largest seating over 400 visitors) hosts over 350 concerts and around 250 education events a year including the National Youth Music Camps which take place over the summer.

<https://stables.org> box office: 01908 280800



Wavendon Community Centre

Go to Community Centre pages at
<http://www.wavendonparishcouncil.co.uk>

Wavendon Community Centre is conveniently located in the centre of the Village adjacent to St Mary's C of E School and opposite St Mary's Church on Walton Road in Wavendon.

Our hall is a great venue for village activities, fund raising events, anniversary, family parties and is a very popular place for young children's Birthday parties.

The Community Centre has a well-equipped kitchen suitable for commercial caterers, or for the self-catered party.

To check the Community Centre availability, hire charges, terms and conditions and all other queries please contact our Hall Manager, Sue Hopkins on 07512 685198.



Wavendon Community Hub/Pavillion

The new Community Hub / Pavilion building off Dankworth Way opened in 2023 and the associated playing fields will be in operation for the soccer season 2023/24.

For information on hiring the building contact The Hall Manager, Sue Hopkins on 07512 685198 or via email hallmanager@wavendonparishcouncil.co.uk



Local Authorities

WAVENDON PARISH COUNCIL

<http://www.wavendonparishcouncil.co.uk>



You may contact the Council through Alan Kemp
the Parish Clerk by post at:

57 West End, Long Whatton, Loughborough, Leicestershire,
LE12 5DW or via the telephone on 01509 844241

The Parish Council can also be contacted by email at
clerk@wavendonparishcouncil.co.uk

The Parish Council meets on the third Monday of every month (except August) in the Community Centre (Walton Road) starting at 7.30 pm. Each meeting starts with a public open session that allows residents to report concerns or requests for action from its Parish Council.

MILTON KEYNES COUNCIL

The local council derives its powers and functions from the Local Government Act 1972 and subsequent legislation. For the purposes of local government, Milton Keynes is within a non-metropolitan area of England. In its capacity as a district council it is a billing authority collecting Council Tax and business rates, it processes local planning applications, it is responsible for housing, waste collection and environmental health. In its capacity as a unitary council it is a local education authority, responsible for social services, libraries and waste disposal. The council also appoints members to Buckinghamshire Fire and Rescue Authority and the Thames Valley Police and Crime Panel.

www.milton-keynes.gov.uk – 01908 691691



MILTON KEYNES COUNCILLORS
(for the Danesborough & Walton ward which includes
the village of Wavendon and the town of Woburn Sands)

David Hopkins - david.hopkins@milton-keynes.gov.uk

Victoria Hopkins - Victoria.hopkins@milton-keynes.gov.uk

Tracey Bailey - tracey.bailey@milton-keynes.gov.uk

Taken from Wavendon Parish (A History to 1890) – The Parish of Wavendon

includes the hamlet of Woburn Sands. Its area is 2,665 acres, and the population in 1851 was 935 souls. There are about 500 acres of woodland. The soil generally is a strong clay or loam; towards the hills it is sandy. The Bedford Branch of the London and North Western Railway passes through a portion of the parish. The village is on the road between Woburn and Newport Pagnell 33/4 miles NW and 5 miles SSE from the former town. Many of the women and children are employed in making bone lace, and some in platting straw.

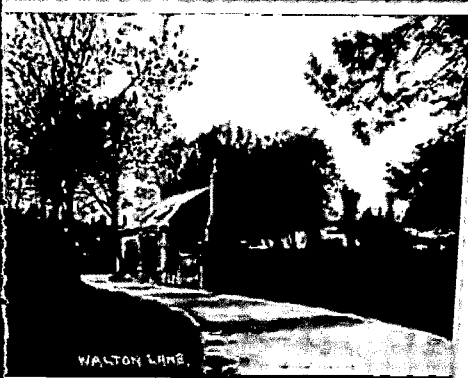
Wauendene is the Domesday name of this place. The Earl of Morton, Hugh de Bolebec and Lewis de Neweham, were the principal landowners here after the Conquest. About 1180 the Passelew family held the principal manor. In 1344 (18 Edward III) a dispensation was granted to William Passelew to celebrate Divine Service in an oratory at his house in Wavendon.

The Peovers had the manor and advowson for a short period, and it passed from them to the Greens. Constance, daughter and heir to Sir Henry Green of Drayton, Co Northampton, brought the estate in marriage to John Stafford, a younger son of Stafford, Duke of Buckingham, and descended to the Staffords of Tattenhoe. It passed in marriage from the Staffords to Edmund Ashfield, Esq (afterwards Knighted), who presented to the Rectory in 1570. Soon after this the manor and advowson were disserved and sold separately; the manor to the Fitz Hugh Family, from whom it came by marriage to the Cranwells. It subsequently passed successively to the families of Beale, Cullen, and Isaacson. Robert Isaacson Esq, was Lord of the Manor in 1735. When the Bucks section of Lysons Magna Britannia was compiled, this manor was the property of "Mrs Denison, widow of the late Principal of Magdalen Hall, Oxford", who was a descendent of the Isaacsons. It now belongs to William Henry Denison Esq, of Hardwick Cottage – a handsome villa residence – at Woburn Sands.

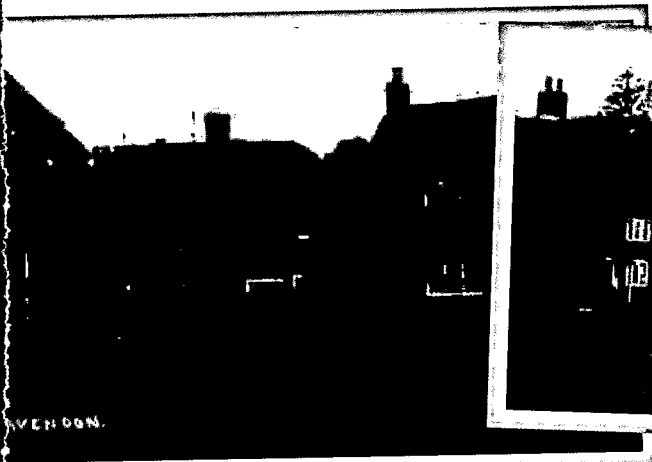
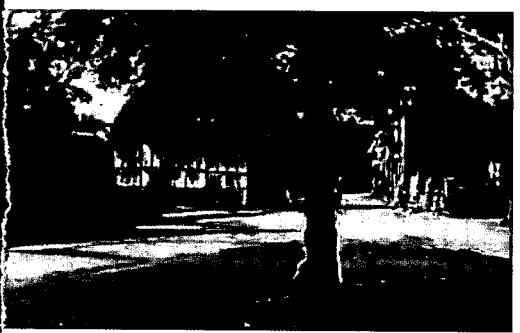
These estates were held of the extensive Royalty of Brockborough, for several generations the property of the Greys, Earls of Kent. This family sold their claim, about the year 1630, to the family of stone, who conveyed their right to the Russells, Dukes of Bedford, about 1702; and that noble family receive a small quit-rent in virtue thereof.

The Act of Parliament which passed in 1788, for inclosing the parish of Wavendon, describes the several owners of the estates as claiming the "manor" of Wavendon and a right to the heath; and these claims having been examined, the Commissioners determined that Mrs Denison's was the only estate entitled to an allotment on account of manorial rights.

The Messers. Lysons' write:- "Wavendon Heath was planted about the year 1778, with Scotch firs, by Francis Moore, Esq of Eggington, in the neighbouring county of Bedford. The authors of the Agricultural Report tell us "they continue" that this gentleman received the gold medal from the Society for the Encouragement of Arts and Manufacturers, for planting those firs; that the whole number planted was 51,376; and that in 1794, after having been several times thinned, there remained 17,125 thriving trees, from 20 to 28 feet in height. The appearance of the heath (now, by purchase, the property of the Duke of Bedford) has been much improved by these plantations, and it exhibits some very picturesque scenery. The noble mansion and park of Woburn Abbey are seen, perhaps to more advantage from some parts of the heath, than from any other spot".



WALTON LANE.

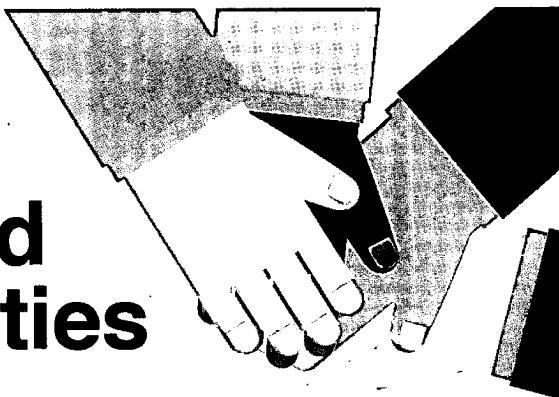


WAVENDON.



Wavendon Village.

Building Connected Communities



Things you can do locally...

Know your neighbours•Laugh and have fun together•Stop to talk•Be kind•Don't be afraid to ask for help•Share local knowledge•Nurture green spaces•Create a community garden•Chat to the postie•Be visible in your neighbourhood•Support local shops and businesses•Be mindful of others•Connect with nature•Join your local sports club•Start a walking group•Do something in your local library•Start a

Greet people

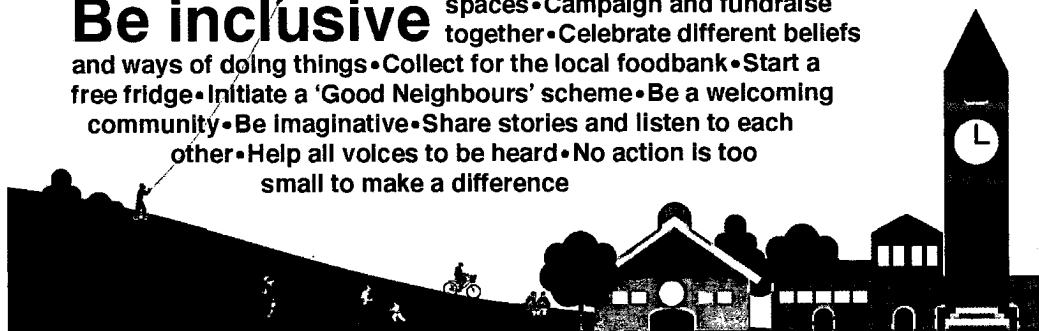
neighbourhood newsletter, blog or social media group•Create a walking trail in your local area•Offer your skills•Share food with neighbours•Organise a litter pick•Grow plants or flowers and give them to neighbours•Create a play area•Start a new tradition•Open a community repair shop•Start a Men's Shed•Have a street party•Join a local

hobby group•Start a new neighbourhood interest group•Build something together•Launch a neighbourhood swap shop•Start a community project with people of all ages•Record local oral histories•Reimagine neglected spaces•Campaign and fundraise together•Celebrate different beliefs and ways of doing things•Collect for the local foodbank•Start a free fridge•Initiate a 'Good Neighbours' scheme•Be a welcoming community•Be imaginative•Share stories and listen to each other•Help all voices to be heard•No action is too small to make a difference

Use the local park

Involve young people

Be inclusive



Charity

Student Grants

The George Wells Charity was set up with money bequeathed by George Wells of Wavendon. He died in 1713 leaving a sum of money to provide assistance to scholars. The charity now offers students up to the age of 25, who are full time College or University students or taking NVQs and who live in the Ancient Parish of Wavendon which includes the original part of Wavendon, Woburn Sands and Aspley Heath, an opportunity to make one claim per annum on the charity. Any claim a student makes must relate exclusively to the costs incurred in relation to books, uniforms and equipment required as part of their course of study.

Applying for a grant is straightforward and requires filling in an easy application form that needs to be completed and returned with receipts for costs incurred by the student. The grant cannot be used to cover the costs of printer cartridges, computers or travel expenditure.

If you would like to obtain further information or access to an application form please telephone 01908 585368 or email l.stapleton@wsc.org.uk

If you would like to read more about George Wells follow this link www.mkheritage.co.uk/wsc and scroll down to the Wells Charity Wavendon Research Project.

Milton Keynes Community Foundation

MK Community Foundation is a leading grant-making charity sending funding where it's needed most in Milton Keynes.

With our donors help we transform lives and strengthen communities across Milton Keynes. We support local people who are working to make a real difference to vulnerable, isolated and disadvantaged people in MK.

We provide a range of grant programmes to support both small grassroots groups right through to larger organisation working in the voluntary, community and cultural sector across MK.

We make it easier for local people to support the whole community, giving money as individuals, families and businesses.

We make it easy for charities and Community Groups to apply for funding and support from us.

<https://www.mkcommunityfoundation.co.uk>

Help With Heating Bills

A long-established Charity in the Wavendon/Woburn Sands/Aspley Heath area (The Three Parishes Charity) provides a grant towards heating bills for the less well-off and pensioners on small fixed incomes. To qualify for a grant, applicants need to:

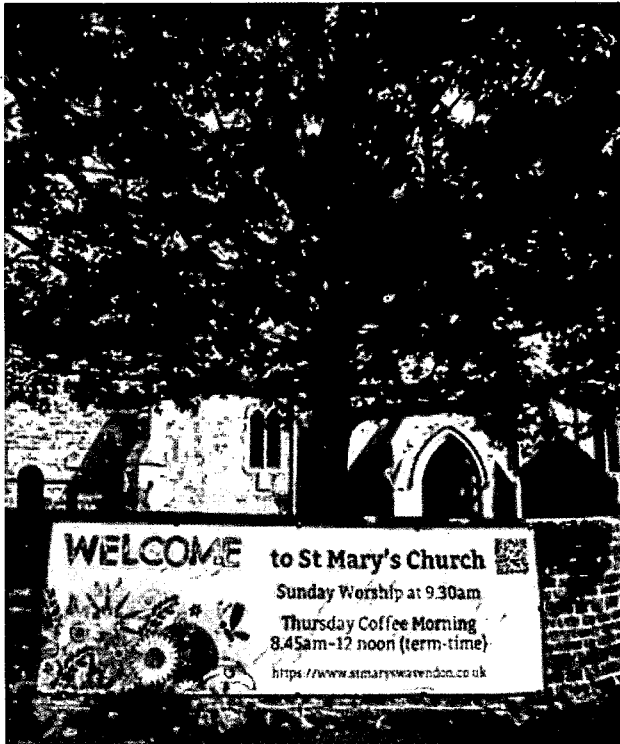
- apply in writing;
- have lived in Wavendon Parish, Aspley Heath or the town of Woburn Sands for at least one year;
- have a declared annual income, which in the opinion of the trustees, qualifies for a grant;
- be prepared to answer questions about their income and personal circumstances. This information will be held in confidence and not disclosed to any other party;
- be living off their own means and not supported financially by their family.

Note: If approved, the grant is paid directly to the energy supplier.

For an application form, please write or email to:
Mrs Susan Hopkins,
80 Walton Road,
Wavendon, MK17 8LW

E.suane.hopkins@gmail.com

KNOW ANYONE YOU THINK
MIGHT QUALIFY? WE'LL
FOLLOW UP!
CALL PETER BALLARD ON
01908 585855



St Mary's is a warm and welcoming church at the heart of Wavendon Village

We're a united yet diverse community from a broad range of backgrounds, encouraging one another in our walk with Jesus Christ, and exploring where this journey will take us.

Whether you're looking to meet others in the neighbourhood, are curious about faith, or consider yourself a Christian – **all are welcome in this place.** Check out our website:

stmaryswavendon.co.uk

Come and meet us

Sunday – Services 9:30am every week

Cafe Church monthly: every 2nd Sunday

Family-friendly worship, with a dedicated children's group and refreshments after service

Thursday – 'Open Door' Coffee Morning 8:45am to 12pm weekly in school term

A popular get-together for all sections of our community: school mums/dads/carers, local residents, church members and friends, passers-by. Drop in any time throughout the morning for a chance to chat, to laugh, to eat cake and drink proper coffee: **see you there?**

Serving this community

- we run a weekly 9-to-14s youth group, and invite local schools to explore our unique C13th church
- we host social events such as the Harvest Supper, monthly Tuesday quiz nights, and talks on topics of public interest: open to everyone!
- we provide opportunities for prayer and study, in partnership with other churches throughout Milton Keynes
- pastoral support is always available with practical help and guidance
- we act as a focus for ceremonies of national or local significance, such as Remembrance Day or MK50

For those investigating faith

- we hold regular **Alpha courses**, and a fortnightly weekday discussion group allows us to explore life's big questions together



St Marys Wavendon Church of England Primary School

Wafandun Lane, Eagle Farm South,
Wavendon. Milton Keynes MK17 7AA



**Our new 630 place Primary School opened in
September 2020 and our 39 place Nursery
opened in September 2021**

CONTACT THE OFFICE PLEASE AT

office@stmaryswavendon.milton-keynes.sch.uk
or call **01908 582182**

for an appointment to view our school or for a copy of the school prospectus



**THE ARMY WAS BORN OUT
OF AN IDEA TO MAKE A
DIFFERENCE IN THE LOCAL
COMMUNITY.**



We are a group of about 15 people who work mainly in the village at present to look after the flower beds and cut the grass at the entrance by the Wavendon Arms pub.

We have planted trees and bulbs in the recreation ground and made improvements to the area generally.

We have even cleaned street gutters and drains!

Now we are going to be a larger populated area there will be a greater need to keep areas tidy and make improvements and we are always looking out for new members.

We tend to meet mid-week so if you have a few hours spare once a month and would like to join a friendly bunch doing good work for our community email -
roger@performancemedia.co.uk

WELCOME TO WAVENDON

If you're thinking of moving to Wavendon, or indeed have just set up in your new home, then becoming part of a vibrant and energised community may well be a priority for you and your family. If so, you could do no better than getting involved with Woburn & Wavendon FC, one of MK's oldest and largest grassroots football clubs.

Over 50 teams from Under 6 through to adult (girls, boys and mixed) as well as disability, means there's an opportunity for all to get involved in community grassroots football at its best.

Described by the Football Association as *"without doubt, a shining example for grassroots football clubs everywhere"*, WWFC members benefit from:-

- Regular pro-coaching and specialist GK training.
- Weekly training provision for all teams (including Winter floodlit).
- Some of the best local playing locations.
- First team playing kit and training kit provided.
- Fun, friendship & footballing development.

Whether playing, coaching or volunteering, there's no better way to get involved in your new exciting community.

Email:- getinvolved@ww-fc.co.uk
or visit ww-fc.co.uk



ACCREDITED
PART OF ENGLAND FOOTBALL

